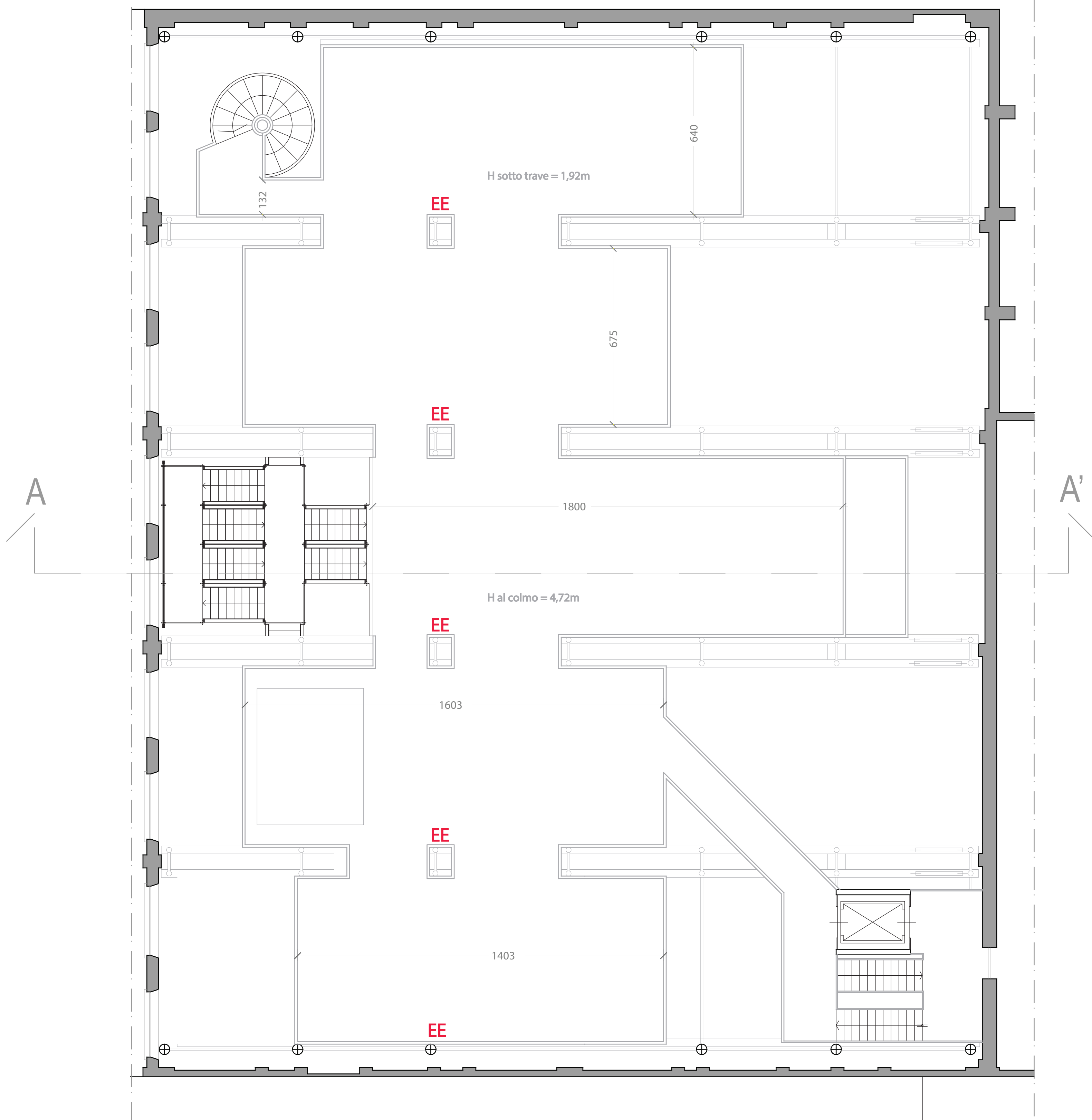


PRIMO PIANO



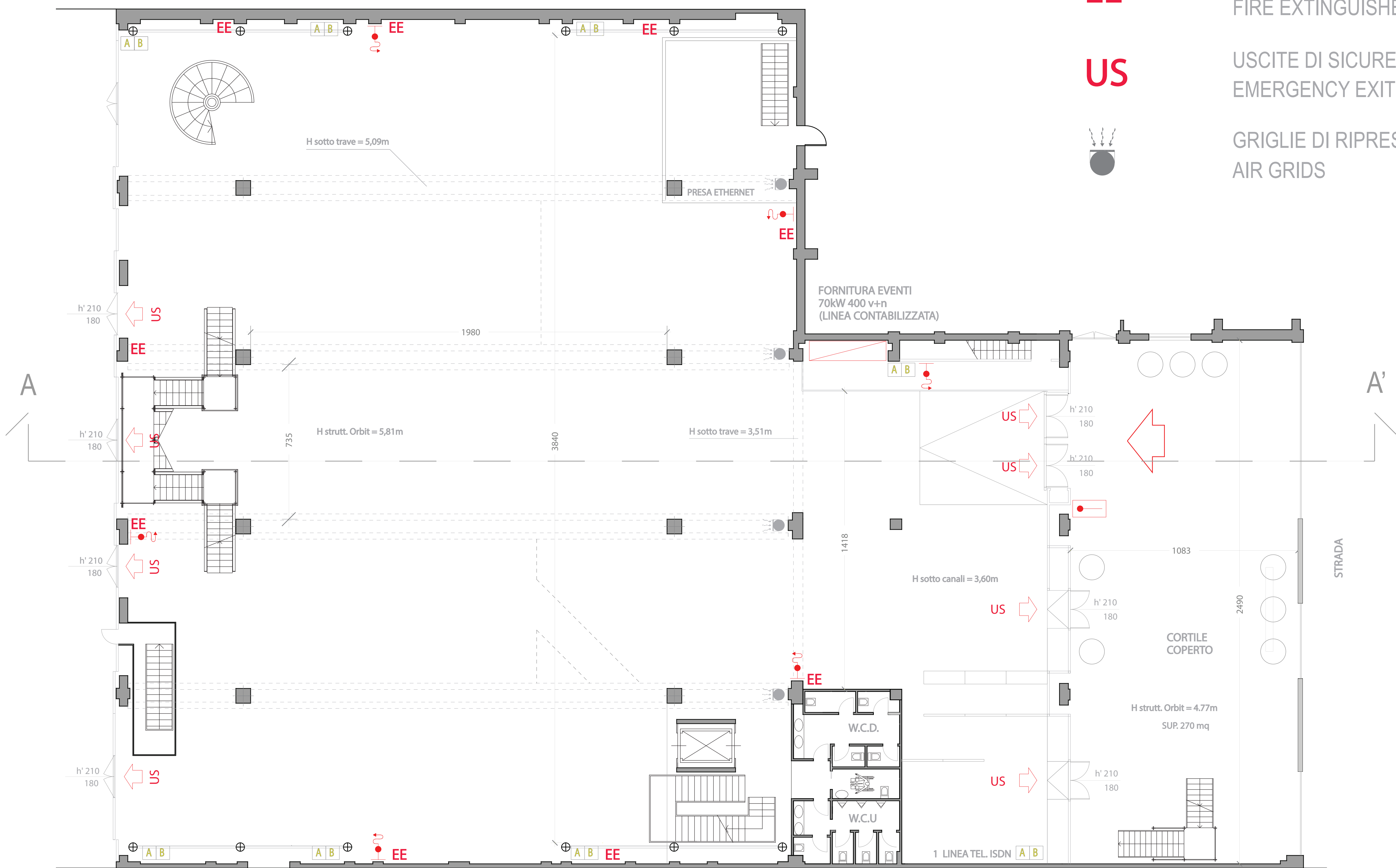
Piano Terra Altezza Massima h. 5,81 m
Mq 1300
Primo Piano Altezza Massima h. 4,72 mt
Mq 500
Struttura completa di travi portaluci
Fornitura elettrica eventi : 1 quadro da 70 Kw 400 v + n

Level + 0.00 mt
Ground floor Max. height 5,81 m
1300 sq m
First Floor Max. height 4,72 m
500 sq m
Light-bearing beams
Power : 1 distribution board 70 Kw 400 v + n

LEGENDA

- A 32A - 400V
- B 16A - 220V
- QUADRO ELETTRICO
DISTRIBUTION BOARD
- IDRANTE
FIRE-PLUG
- ATTACCO MOTOPOMPA VVF
FIRE-ENGINE CONNECTION
- EE** ESTINTORE
FIRE EXTINGUISHER
- US** USCITE DI SICUREZZA
EMERGENCY EXIT
- GRIGLIE DI RIPRESA ARIA
AIR GRIDS

PIANO TERRA



SCALA METRICA
METRIC SCALE

