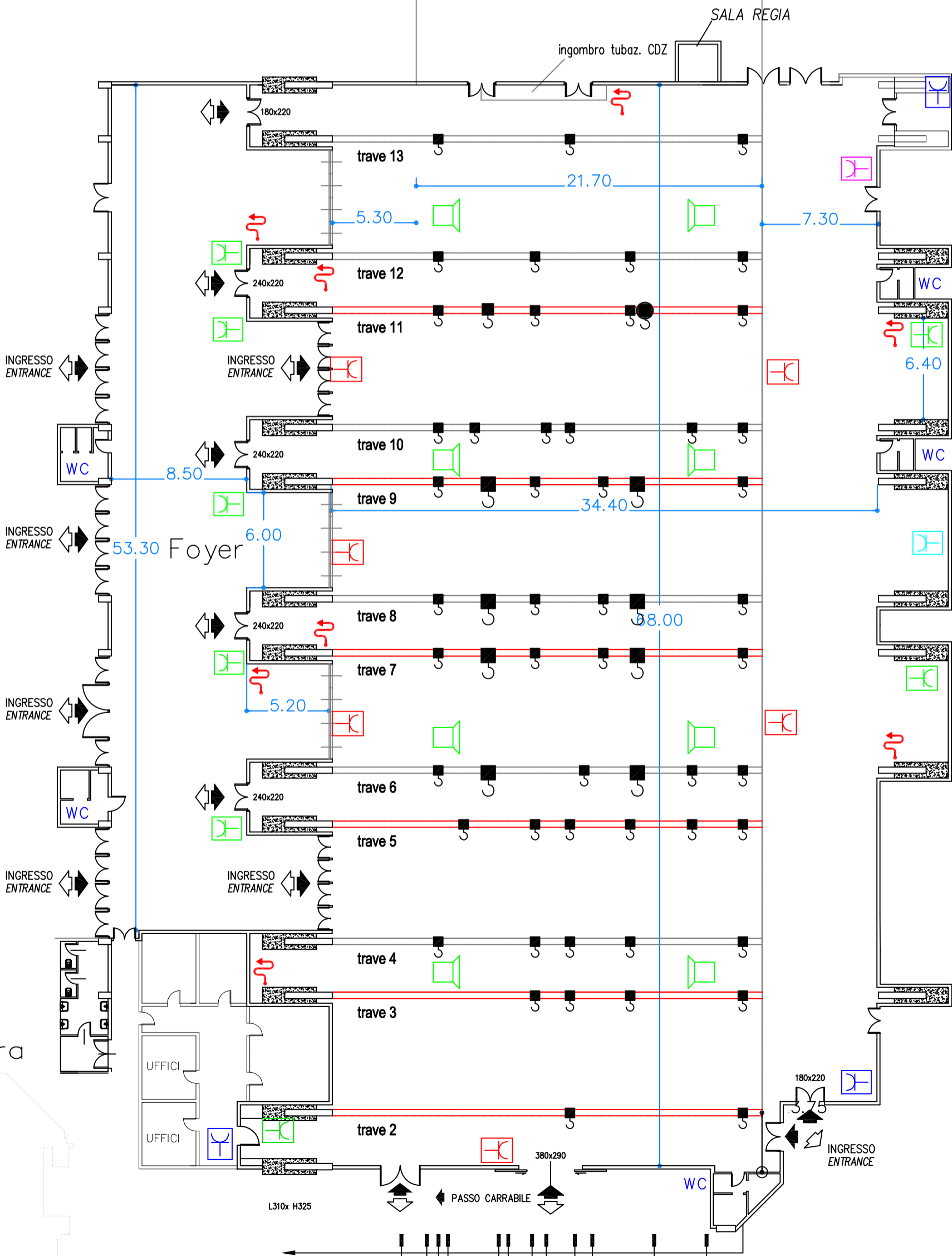
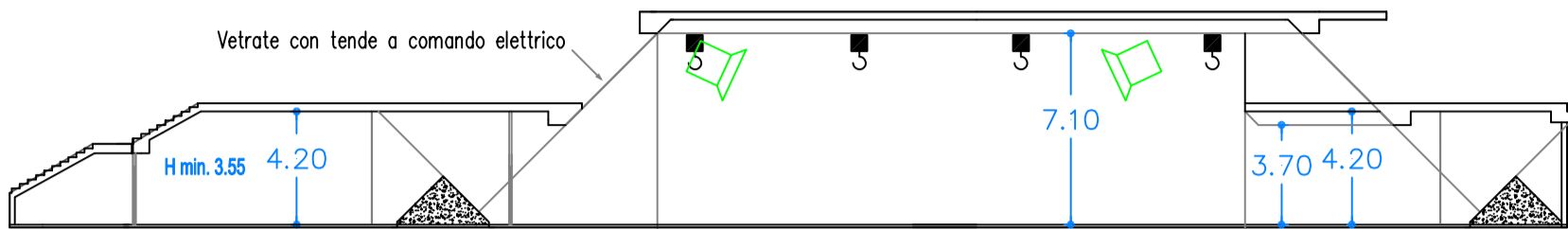


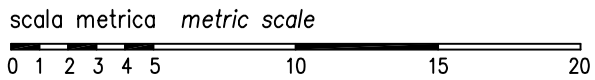
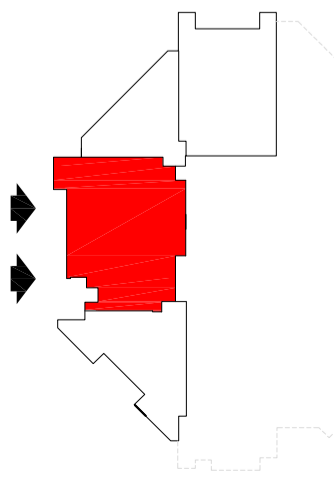
Superficie totale: mq 2359+625 (foyer)  
 Livello: +0.00 mt  
 Altezza max: 7.00 mt  
 Illuminazione media: 800 lux  
 Potenza elettrica a disposizione: max. 200 KW  
 Possibilità aggancio strutture

- Americane
- Portata americana max 285 kg
- Aggancio pesante max 300 kg
- Aggancio pesante max 1.2Ton
- Aggancio pesante max 4.5Ton

- ⊞ Prese 3P+N+T 16A (380V) + 2P+T 16A (220V)
- ⊞ Prese 3P+N+T 32A (380V) + 3x(2P+T) 16A (220V)
- ⊞ Prese 3P+T 16A (380V) + 2P+T 16A (220V)
- ⊞ Prese 2P+N+T 16A (380V)
- ⊞ Prese 3P+N+T 63A (380V)
- ⊞ Casse acustiche JBL 180W a soffitto
- ⤵ Idrante



Piano terra



23.40 21.80 19.20 18.60 15.40 14.80 13.30 12.40 10.60 9.40 5.60 2.30